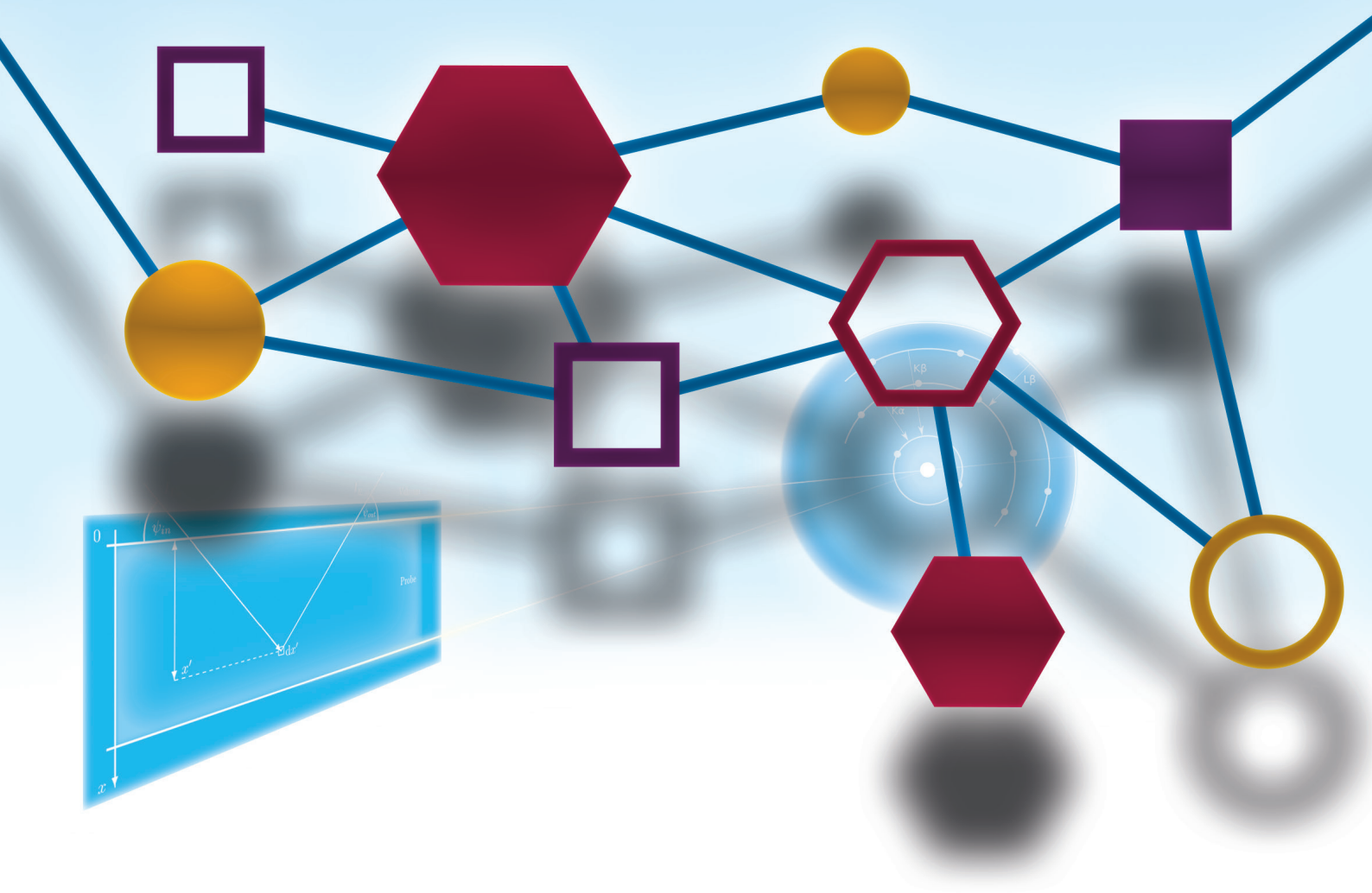
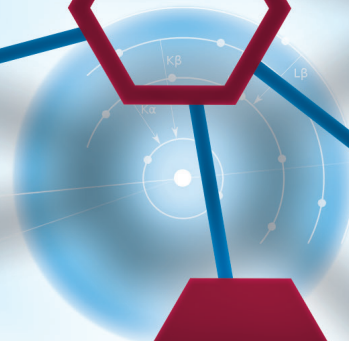
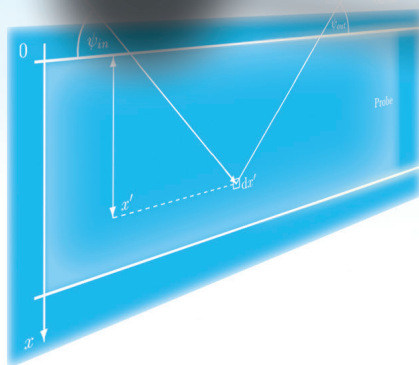


Thinking the Future
Zukunft denken

Education

MyScore

Mobility **S**ystem **C**ooperation in Higher **E**ducation



Summary

The aim of the MyScore project is to establish, further develop and anchor digitally supported curricula in transnational teaching cooperation. Further goals are the development of an infrastructure for the standardized electronic exchange of digital student data (implementing EMREX) and the automation and digitization of recognition procedures to reduce

bureaucratic hurdles and to promote international student mobility. The expansion of blended learning offers will lead to an innovative, future-oriented university with attractive teaching for national and international students, with a particular focus on the further development of teaching content supported by virtual reality.



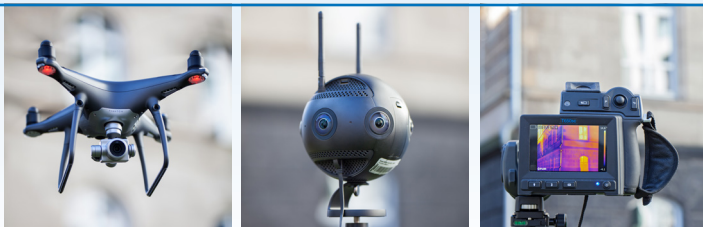
The MyScore project team

Activities

The MRE will expand the educational content of the already developed virtual mining environments (VR mine) and through new blended learning offers in cooperation with the international partner universities: Aalto University (FI), TU Delft (NL) and University of New South Wales (AUS). Such an offer enables students to virtually explore and study the mines in order to promote the (spatial) process understanding, cooperative

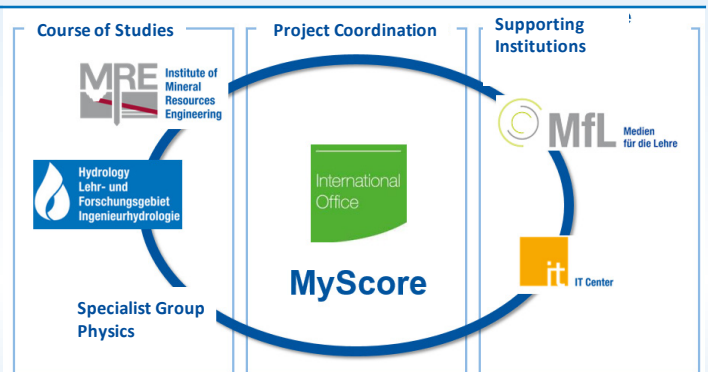
methods of learning, self-determined learning and dynamic adaptation of the students.

Within the framework of the english language Master's programme European Mining Course (EMC), the potential of digitalisation for internationalisation can be used and pilot applications of automated recognition procedures can be tested.



Application of innovative technology

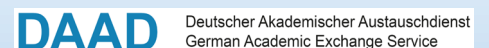
Using a drone, 360°-camera and infrared camera, data is collected and implemented in new VR-supported exercises.



Partners:



Funded by:



The RWTH project Mobility System Cooperation in Higher Education (MyScore) is funded by the German Academic Exchange Service (DAAD) within the framework of the International Mobility and Cooperation Digital (IMKD) programme.

Contact

RWTH Aachen University
Institute of Mineral Resources Engineering
Wüllnerstraße 2, 52062 Aachen, Germany
Phone +49 241 80 97976
kontakt@mre.rwth-aachen.de

<http://mre.rwth-aachen.de>

